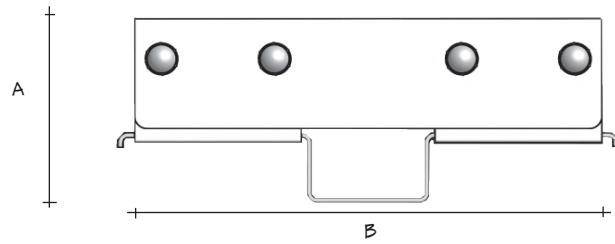
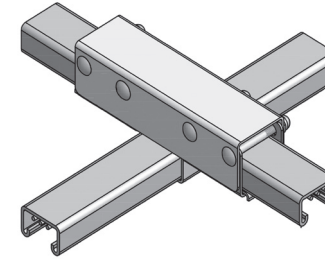


CROSSOVER (1/1)
for use as L, T, X



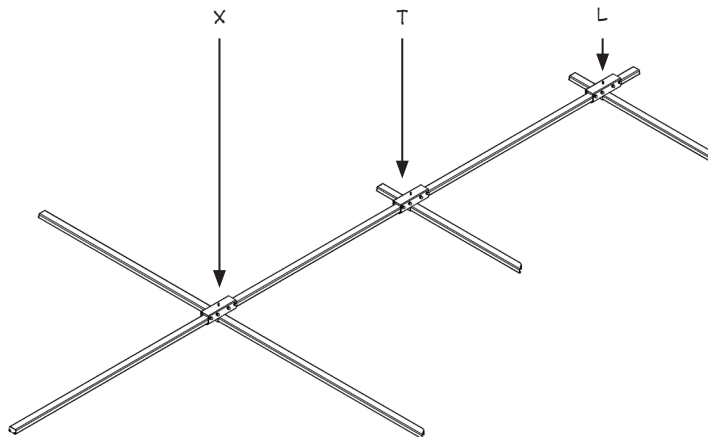
A	B
2 3/4"	7"



busSTRUT (single-deck)		
Product	Length	Catalog Number
1 / 1	Single	CM-S-(F)

Finish - G=Galvanized W=White B=Black

ONE over ONE crossovers are for use with two busSTRUT lengths. Each crossover is a pre-assembled four part unit for building L,T,X crossover grid configurations. The saddle bracket supports the perpendicular busSTRUT. 1/4"-20 bolts slide through to secure, align, and lock both halves of the assembly in one direction.



Crossovers provide the mechanical connection for building runs, rows, and grids. One universal crossover serves as an X, T, or an L intercept. The ONE over ONE crossover is used when one single-deck length of busSTRUT intersects another single-deck length of busSTRUT.