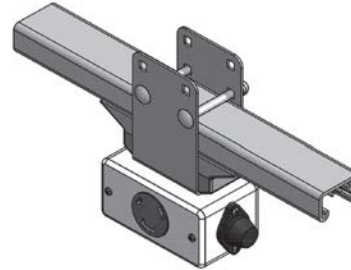
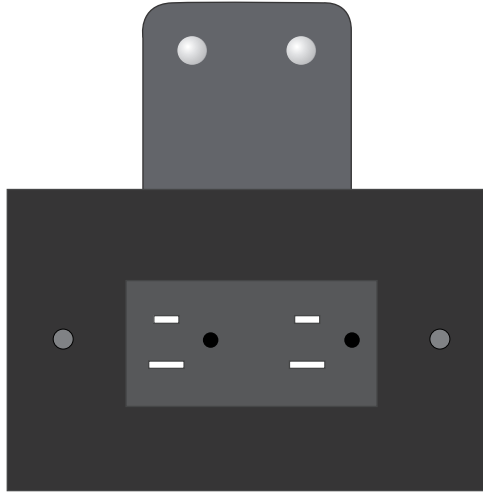




**busSTRUT POWER™  
OUTLET BOX**

busSTRUT	Ckt Amps	Voltage	Total Amps	(F) Finish	Catalog Number
MD	20	120 277	20	G=Grey BL = Black WH = White	MD20-2-15-120-OB-S-(F) MD20-2-15-277-OB-S-(F)



**General:**

-Outlet boxes are for use with busSTRUT/20; single and double-deck. Come complete with a 2 pole flip-fitter and mounting hardware. Included are PREWIRED receptacles. Available in 120V or 277V. Available in powder coated grey, white, and black.