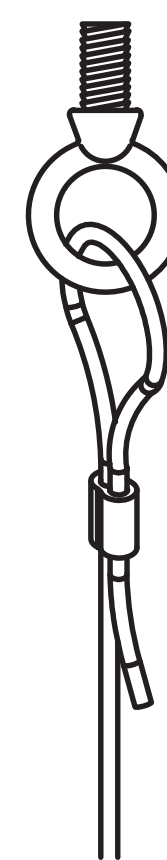


CLICK BUTTON BELOW

STEP 1

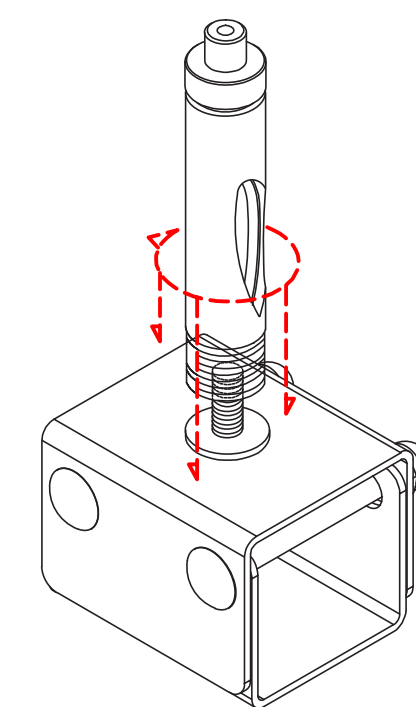
SUSPENDING busSTRUT



1 SUSPEND CABLES

(CG-XX)
ATTACH CABLE ASSEMBLY TO STRUCTURE

**It is the contractor and/or engineer's responsibility to determine correct connection to structure (beam clamp, etc).*



2 ASSEMBLE HANGERS

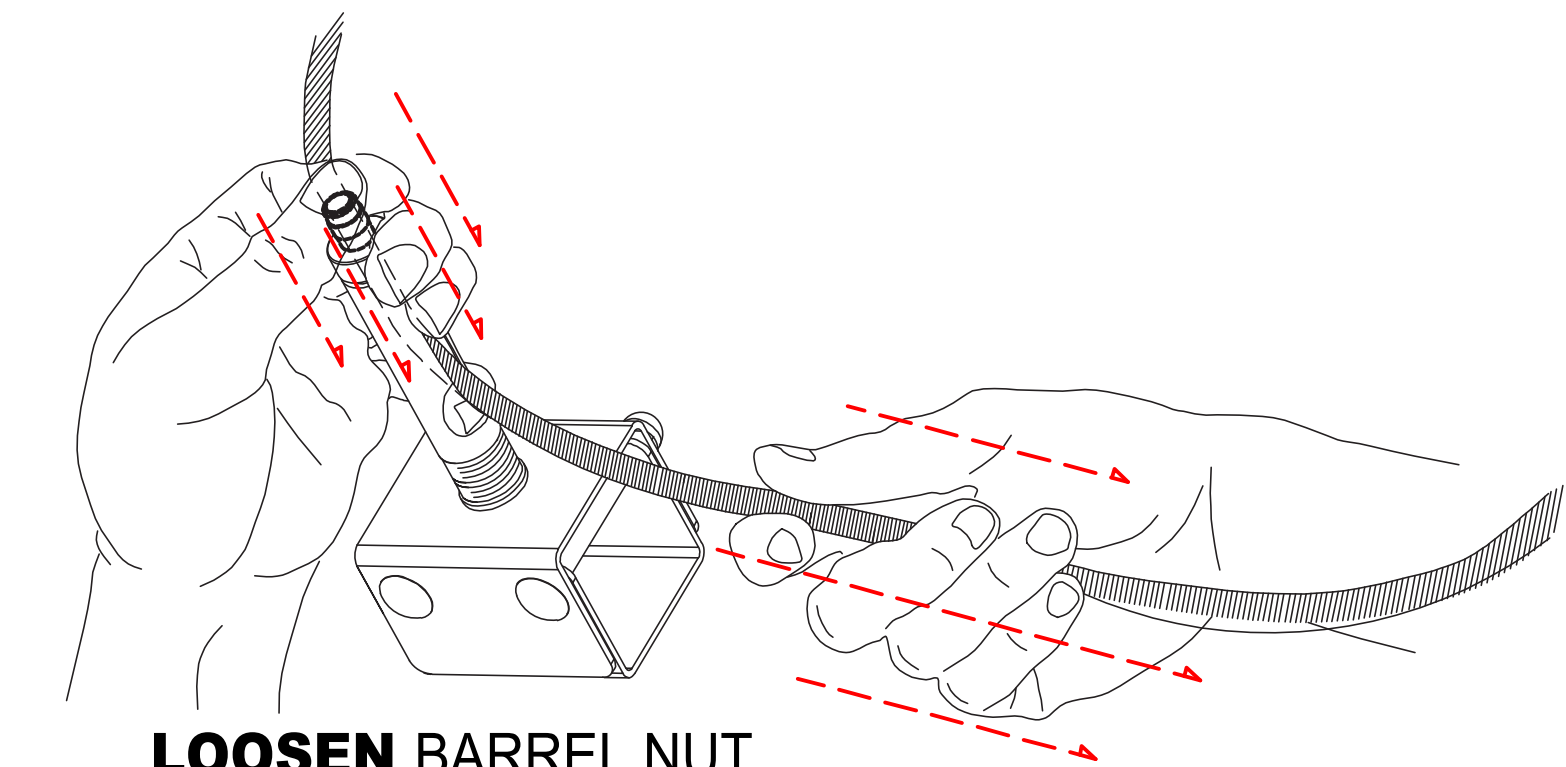
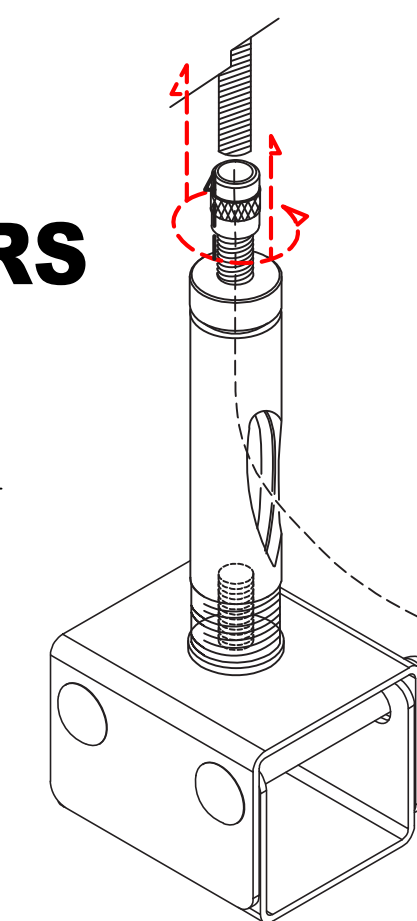
(HM-S)

ASSEMBLE HANGERS AND ATTACH CABLE GLIDE

3 ATTACH HANGERS TO CABLES

(CG-XX)

FEED CABLES THROUGH GLIDE TO ATTACH



LOOSEN BARREL NUT
PUSH CABLE THROUGH
PULL CABLE FOR SLACK

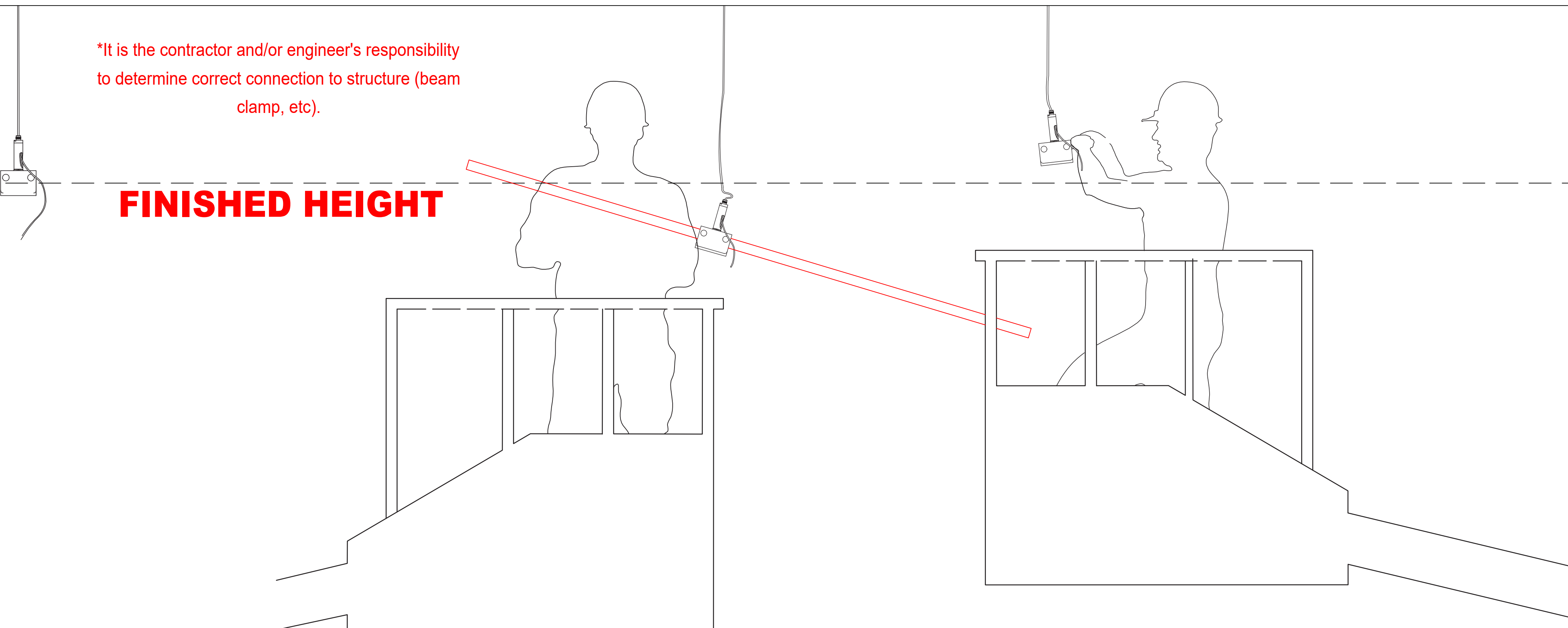
SLIDE busSTRUT THROUGH SUSPENDED HANGERS

Assemble

Create cable suspended runs of busSTRUT. Usually, these are running perpendicular to structural joists. Insert busSTRUT lengths through hangers/crossovers working from FINISHED HEIGHT.

FINISHED HEIGHT

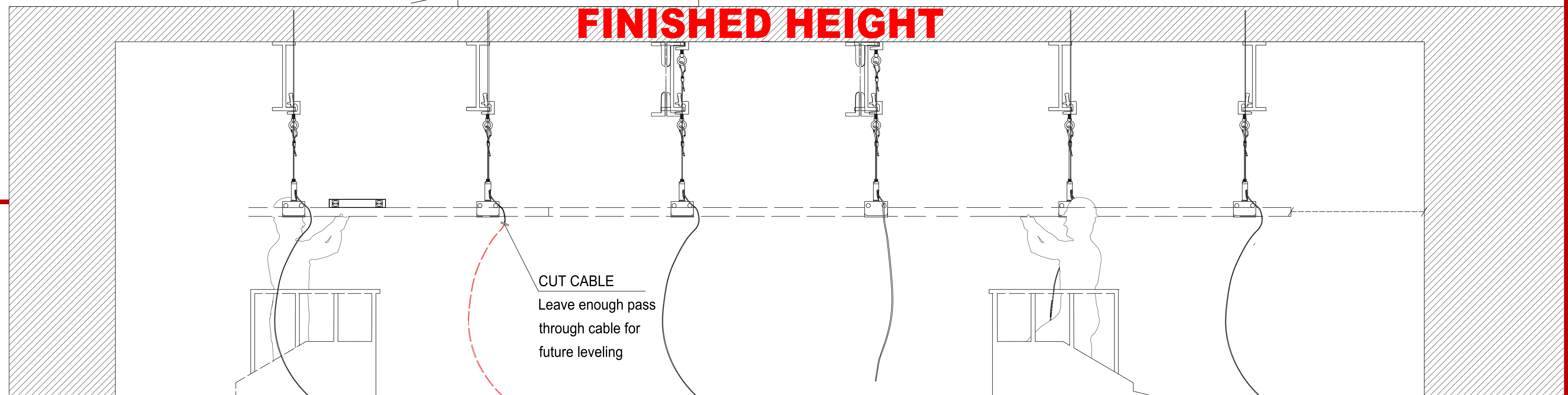
**It is the contractor and/or engineer's responsibility to determine correct connection to structure (beam clamp, etc).*



BE SURE TO FOLLOW busSTRUT MOUNTING RULES (SEE busSTRUT shop drawings)

LEVEL busSTRUT AND TRIM CABLE

FINISHED HEIGHT



CUT CABLE
Leave enough pass through cable for future leveling

CLICK BUTTON BELOW

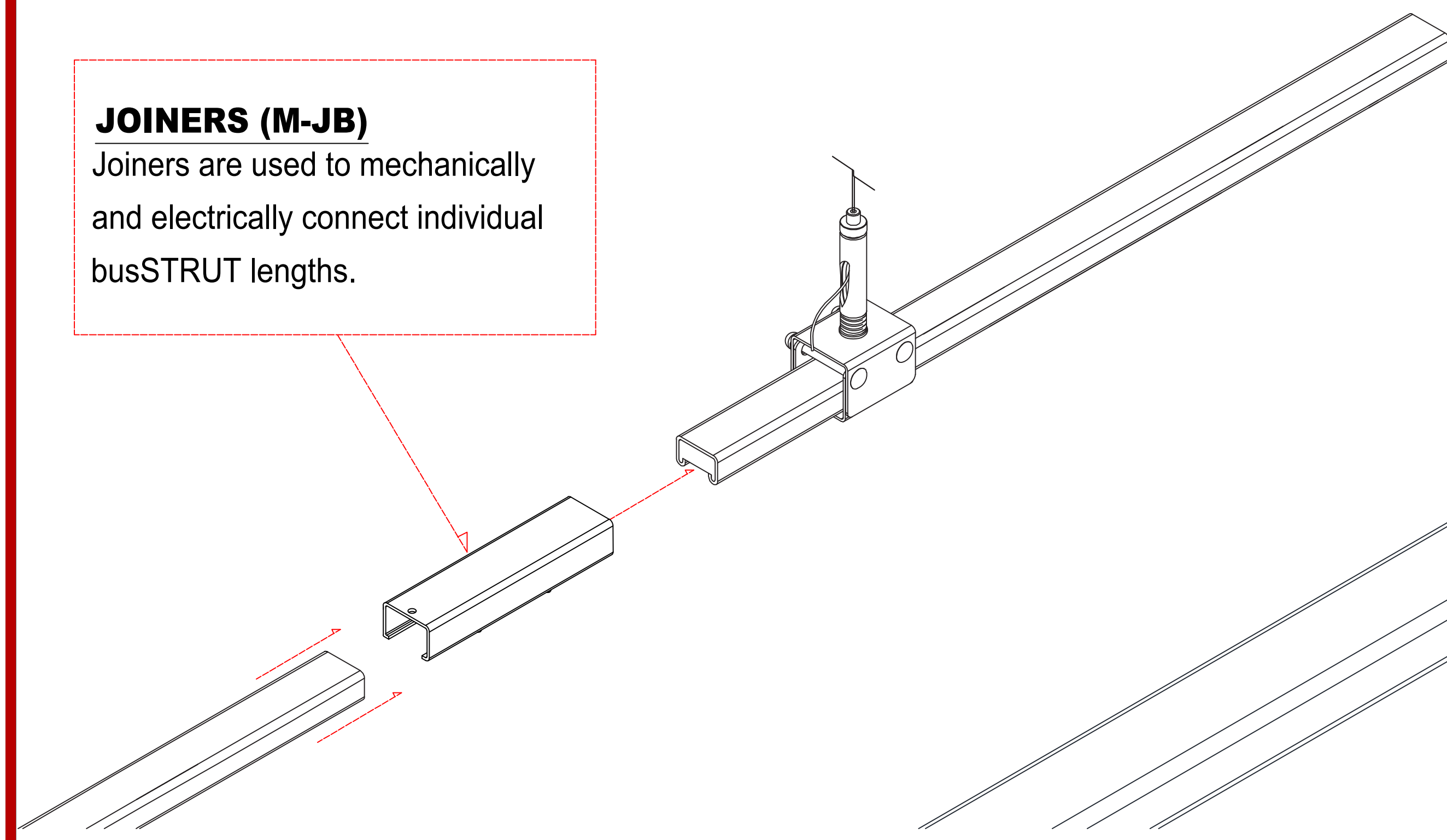
STEP 2

INSERT JOINERS

ATTACH JOINERS TO EACH END OF CONNECTING busSTRUT

JOINERS (M-JB)

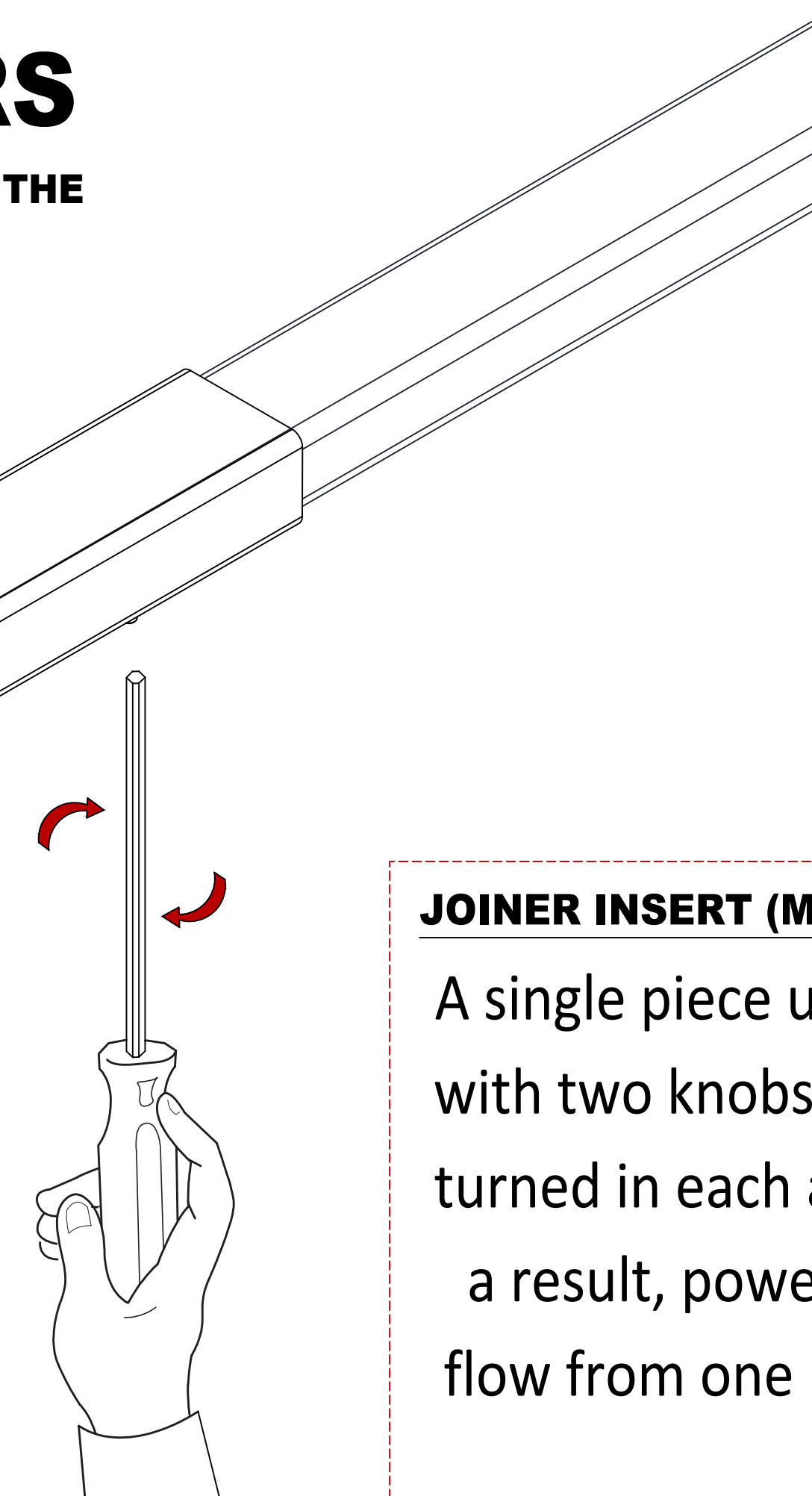
Joiners are used to mechanically and electrically connect individual busSTRUT lengths.



TIGHTEN JOINERS

TIGHTEN SET SCREWS ON THE BOTTOM OF THE JOINER

Joiners require 3/32 Hex key for tightening set screws



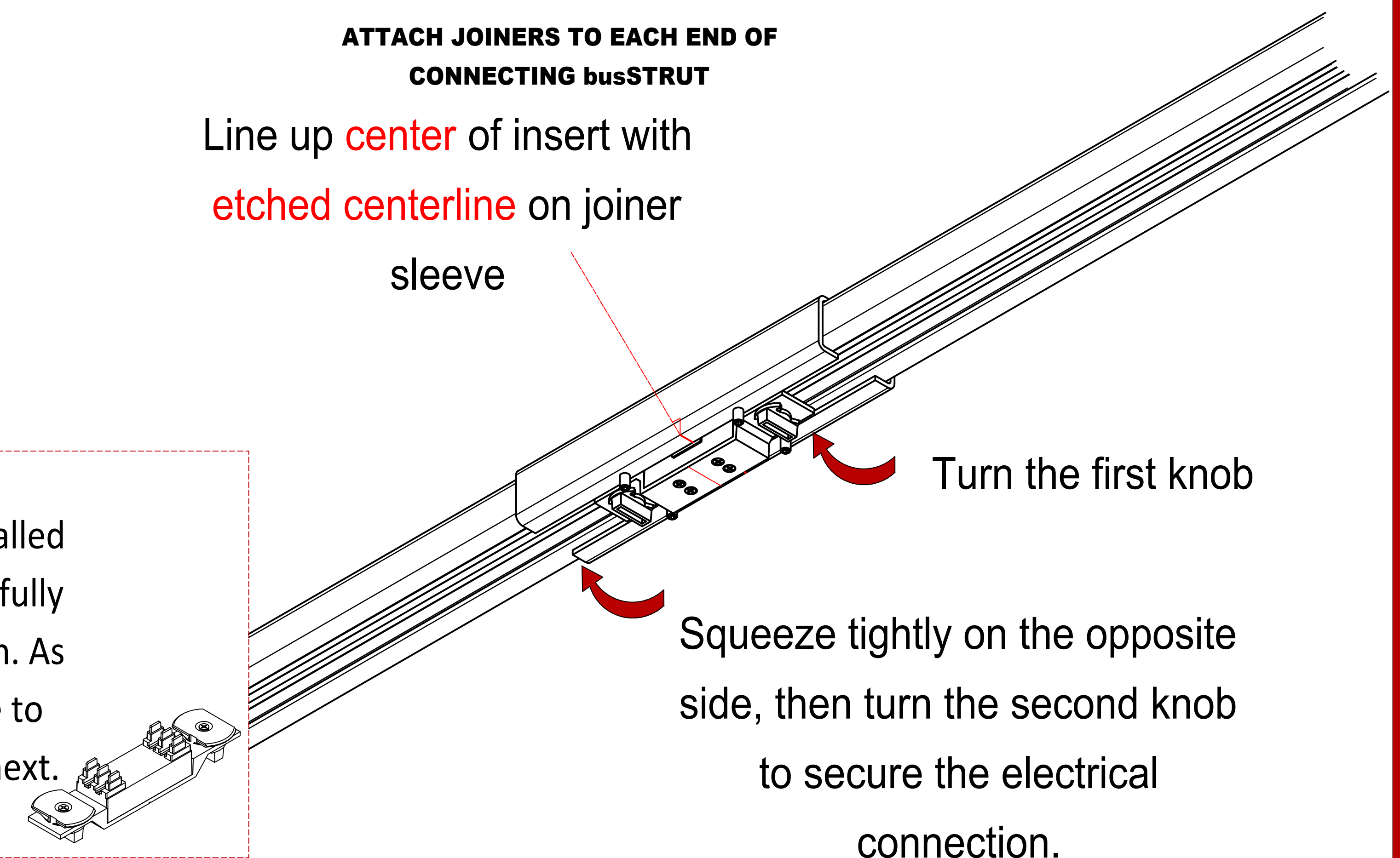
JOINER INSERT (M-JI-X)

A single piece unit that is installed with two knobs, one must be fully turned in each abutting length. As a result, power can continue to flow from one length to the next.

ATTACH INSERT

ATTACH JOINERS TO EACH END OF CONNECTING busSTRUT

Line up center of insert with etched centerline on joiner sleeve



Turn the first knob

Squeeze tightly on the opposite side, then turn the second knob to secure the electrical connection.

**Installation Instruction Guidelines are provided only as that, informative guidelines. Defer to architectural/engineering drawings tailored to the specific project.

bs
busSTRUT
6950 WORTHINGTON
GALENA RD
SUITE 140
WORTHINGTON, OHIO
43085
TEL: 614.933.8695
E-MAIL:
INFO@BUSSTRUT.COM
WWW.BUSSTRUT.COM
PERMANENT RESIDENT:
LARRY GELLERT
CHECKED BY:
JOHN LOCH
DRAWN BY:
JOHN LOCH
ISSUE DATE:
10/21/2020
REVISION NO:
BID/REVIEW

FOOD LION
busSTRUT Installation Instructions

busSTRUT SHOP DRAWING SECTION ONLY		NOT FOR CONSTRUCTION OR ELECTRICAL INSTALLATION FOR ARCHITECTURAL, ENGINEERING OR ELECTRICAL DRAWINGS	
NO.	REVISION DESCRIPTION	DATE	BY
XXX		XXXX	
XX-XX-XX			
PAPER SIZE: ARCH E (48x36)		NOT TO SCALE	
DRAWING NUMBER		E-b01	

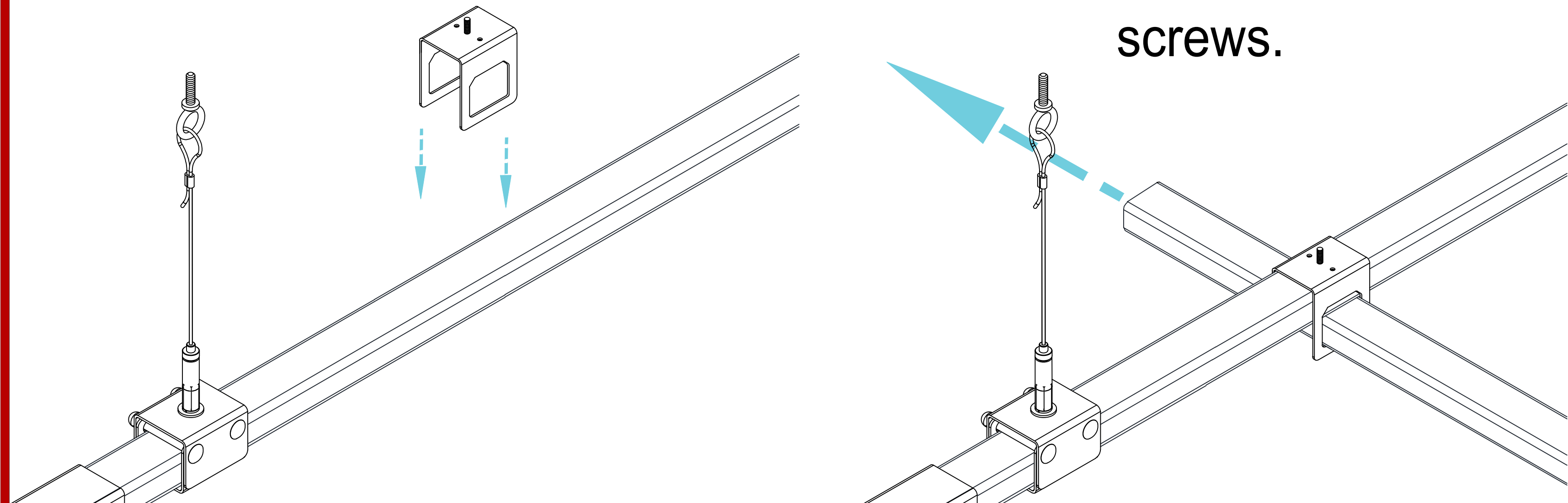
CLICK BUTTON BELOW

STEP 3

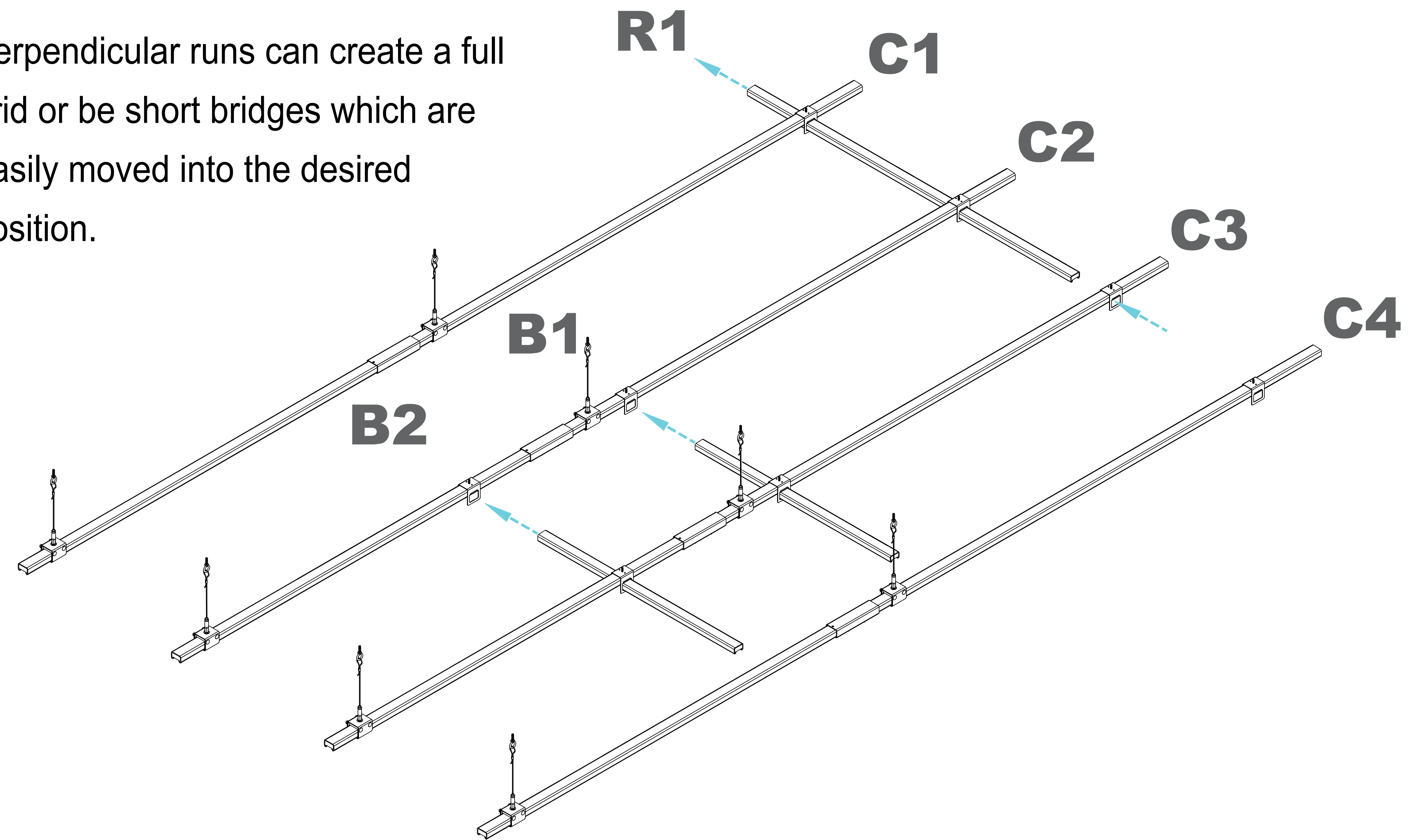
INSTALLING CROSSOVERS DROPPING ON

Crossovers can be dropped onto suspended busSTRUT to create an intersection with a perpendicular run of busSTRUT.

Slide perpendicular runs of busSTRUT through the crossover and tighten the set screws.



Perpendicular runs can create a full grid or be short bridges which are easily moved into the desired position.



CLICK BUTTON BELOW

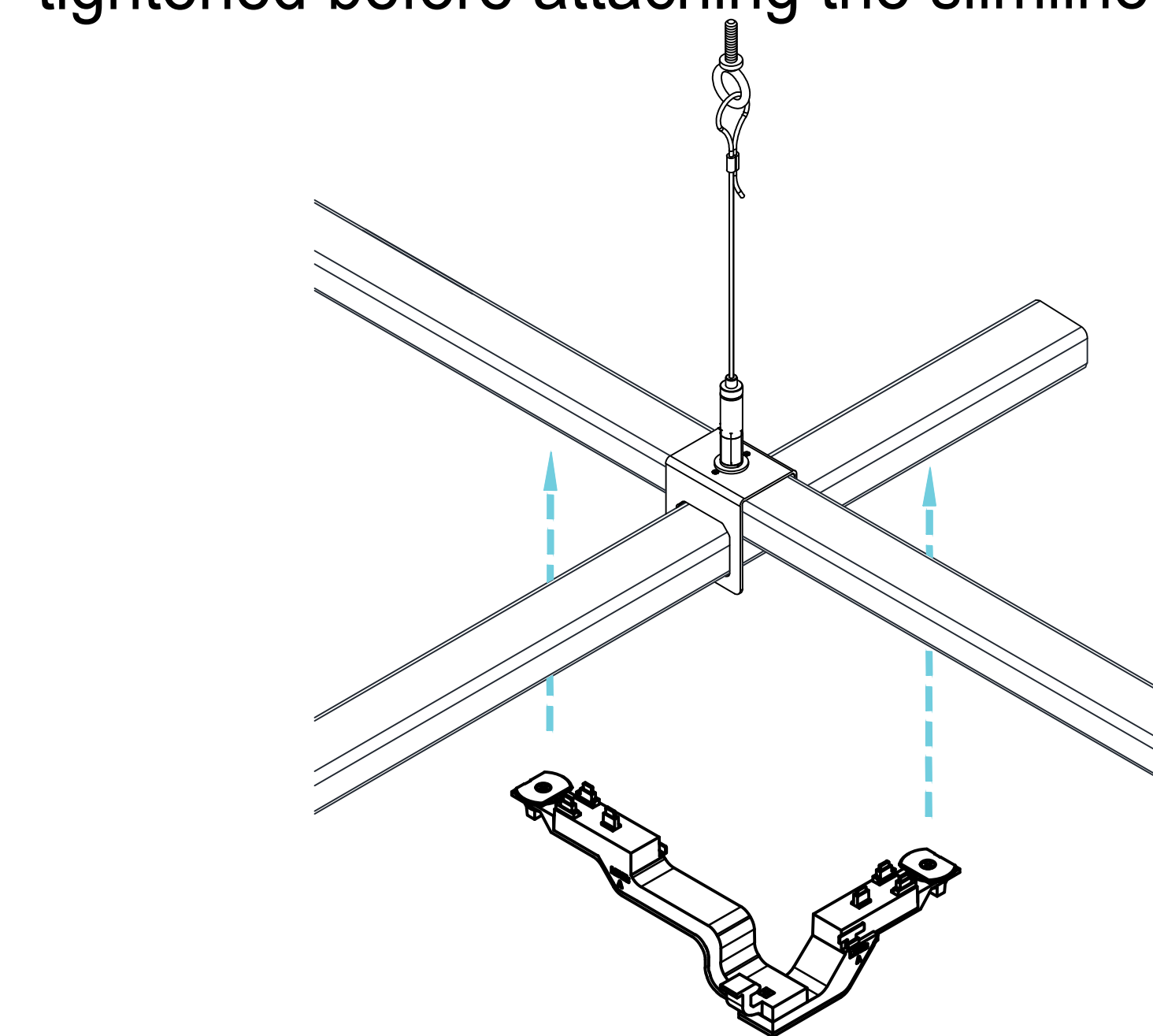
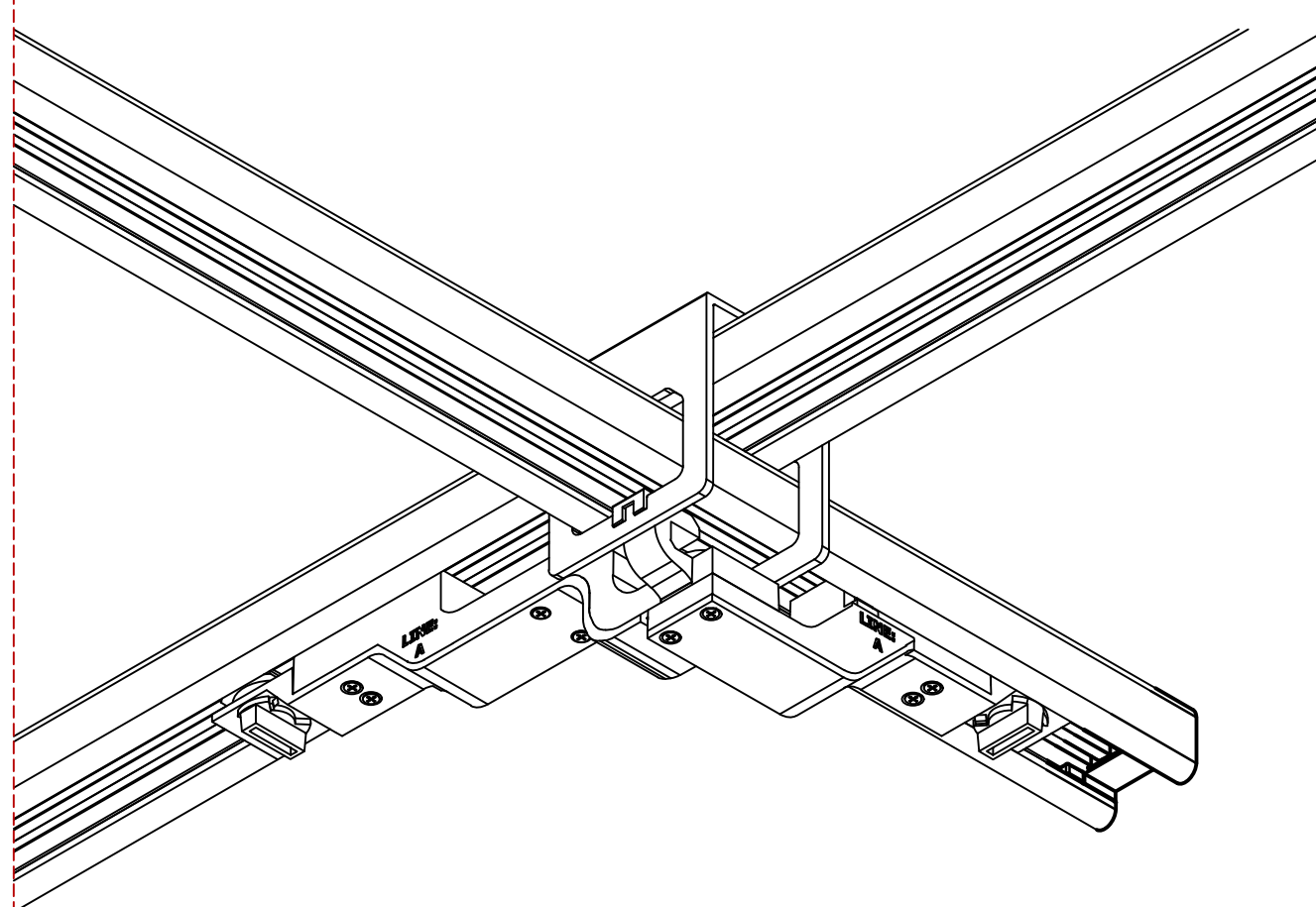
STEP 4A

SLIMLINE JUMPER

Make sure that the slimline crossover is tightened before attaching the slimline jumper.

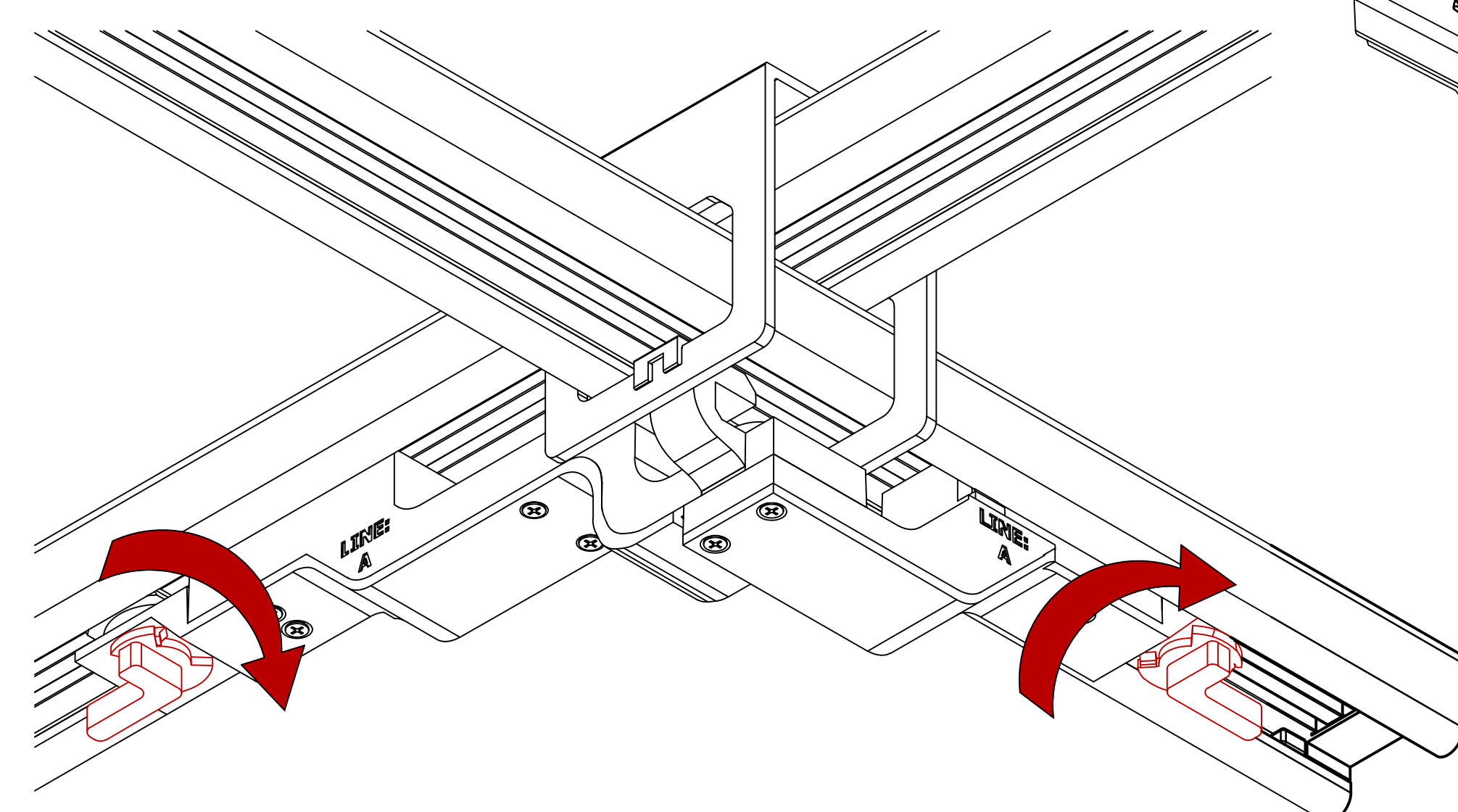
SLIMLINE JUMPER (MD2020-UNIV-IJ-B-X)

A single piece unit that is installed with two knobs, one must be fully turned in each abutting length. As a result, power can continue to flow from one length to the next.



First, clip the jumper to the crossover.

Seat the jumper into the busSTRUT by squeezing tightly on one side and turning the knob. Then, turn the other knob to complete the circuit.



CLICK BUTTON BELOW

STEP 4B

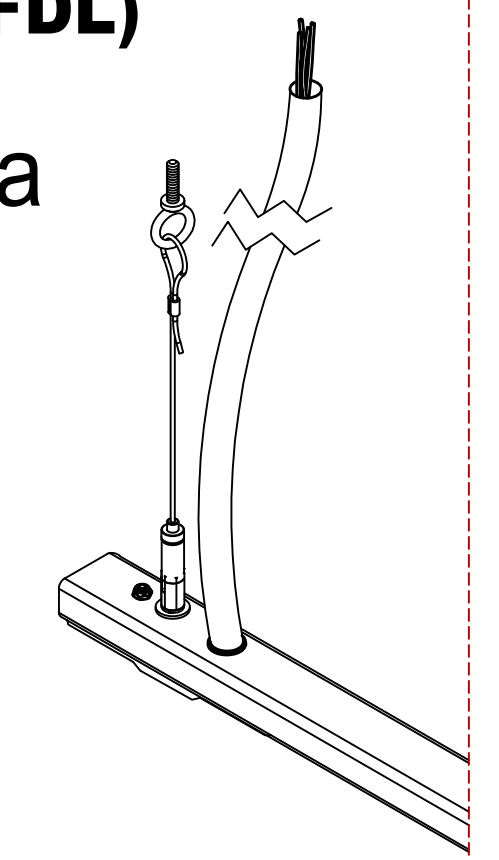
STARTER FEED

The Starter Feed comes with a 1/4-20 Stud to create an additional hang point and a 15' 12/4 SOOW Cord to connect power to the system.

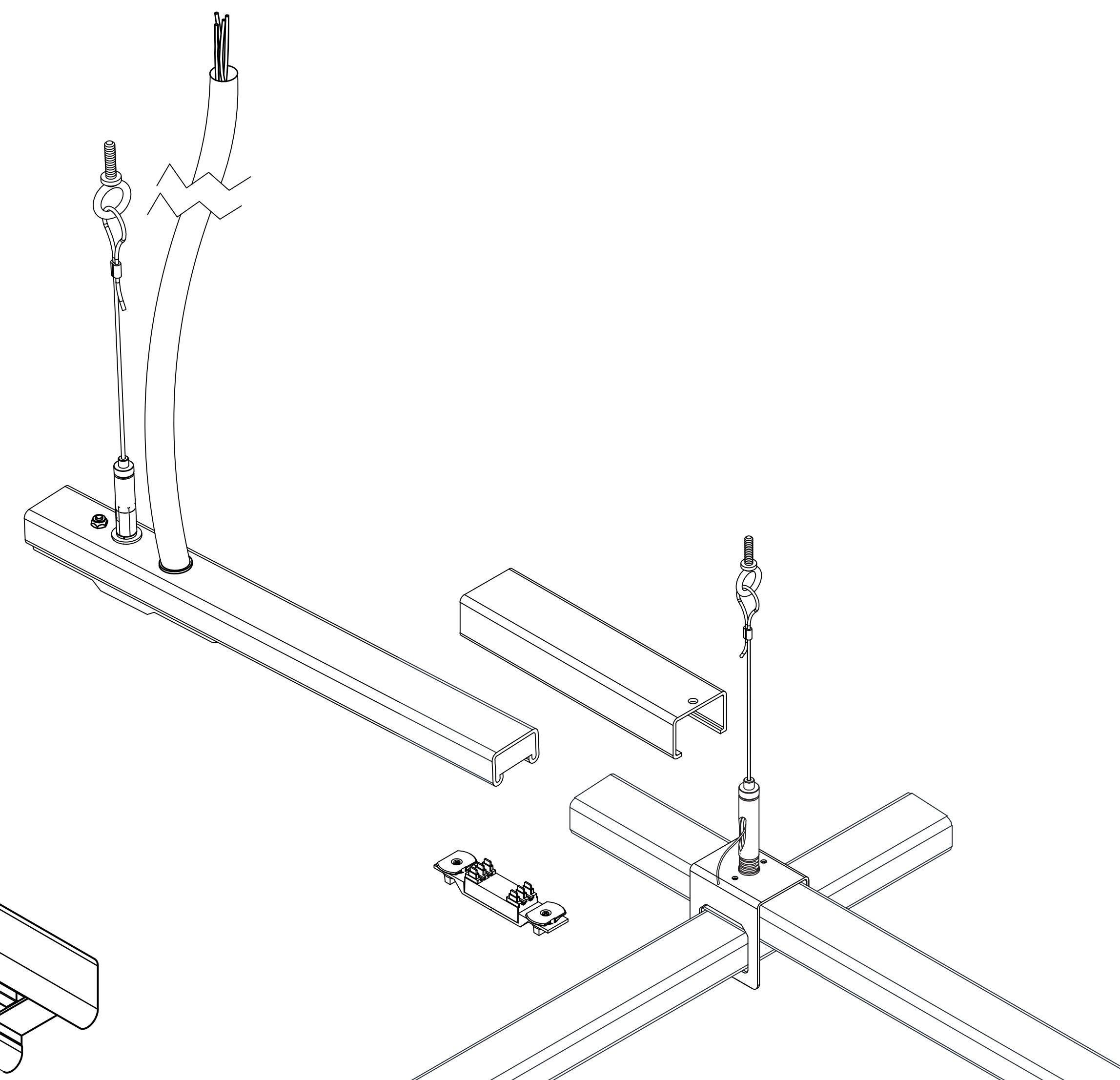
Attach the cable glide to the stud and tighten. Connect the aircraft cable as shown in Step 1.

STARTER FEED (P20-3-40-UNIV-SNF-16-FDL)

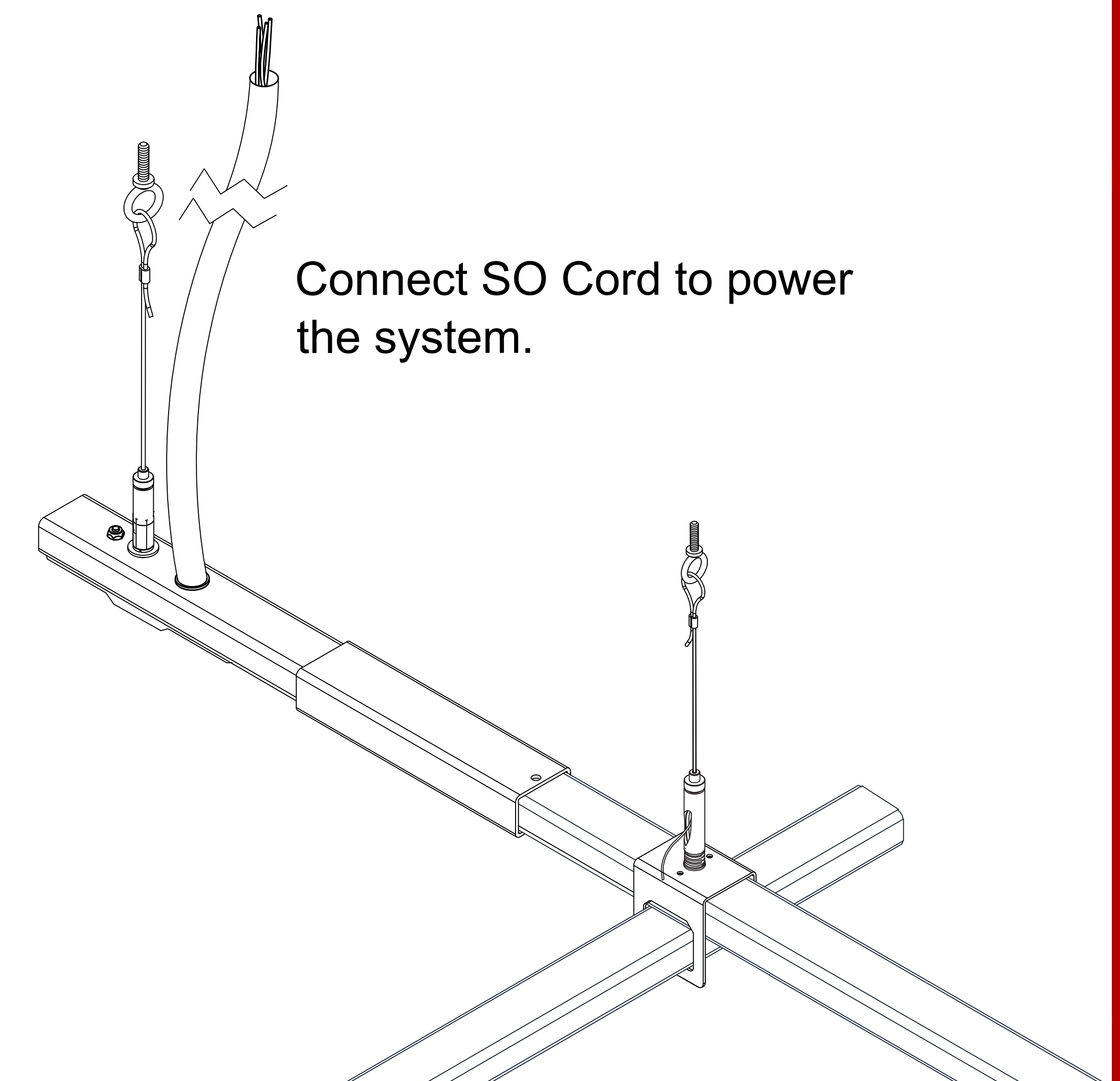
This 16" length supplies power to a configuration from the preassembled cord and to the abutting length via a joiner insert that must be installed.



Once the starter is properly suspended, connect the starter to the suspended grid using a Joiner and Insert as shown in Step 2.



Connect SO Cord to power the system.



**Installation Instruction Guidelines are provided only as that, informative guidelines. Defer to architectural/engineering drawings tailored to the specific project.

bs
busSTRUT
8950 WORTHINGTON
GALENA RD
SUITE 140
WORTHINGTON, OHIO
43085
TEL: 614.933.8695
E-MAIL:
INFO@BUSSTRUT.COM
WWW.BUSSTRUT.COM
PRINCIPAL DESIGNER:
LARRY GELLERT
DESIGNER:
JOHN LOCH
DRAWN BY:
JOHN LOCH
ISSUE DATE:
10/21/2020
REVISION:
BID/REVIEW

FOOD LION
busSTRUT Installation Instructions

busSTRUT
STOP DRAWING SET(O/NLY)
STOP DRAWING SET(O/NLY)
ARCHITECTURAL
ENGINEERING OR ELECTRICAL
DRAWINGS
NO. DATE
REV. DESCRIPTION
BY
PAPER SIZE:
ARCH E (48x36)
NOT TO SCALE
DRAWING NUMBER
E-b02