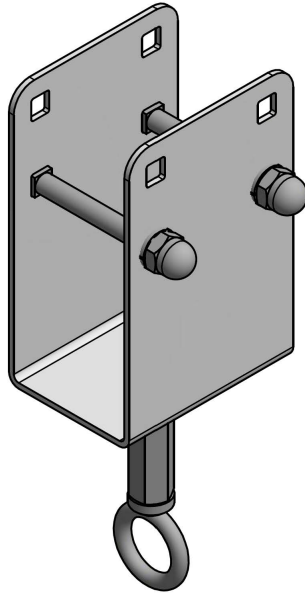


**busSTRUT**  
**SIGN HANGER**

busSTRUT	Ckt Amps	Voltage	Total Amps	(F) Finish	Catalog Numbers	
HS	N/A	N/A	N/A	GV=galvanized BL = Black WH = White	HS-S	HS-E HS-R HMS-X



SGL Hanger with Welded Stud	<b>HS-E</b>
SGL Hanger with Barrel Nut	<b>HS-R</b>
<b>SGL Hanger with Cable Eye</b>	<b>HS-S</b>
SGL Hanger with Hole	<b>HMS-X</b>

**General:**

-For use on any busSTRUT length. Single-Deck or Double Deck. Choose from a complete series of standard Barrel Nut, Barrel Nut with Welded Eye, Center Hole, and/or Cable Glide Versions. Rated for upto 40 lbs maximum static vertical load.